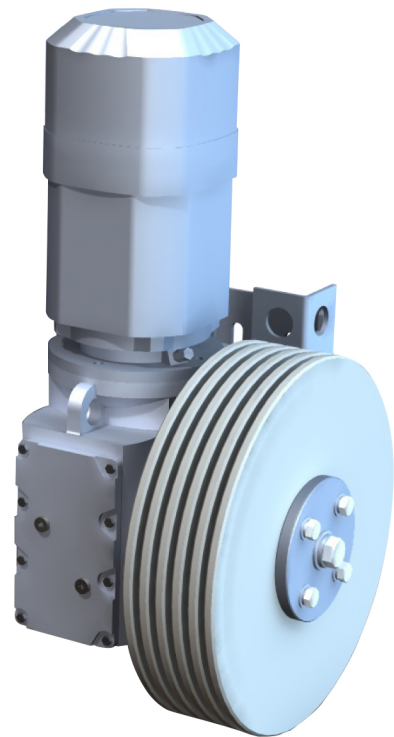


STAGE SETS

MINI YO-YO LIFT

Pile Winch System



STAGE SETS

YL Series

- The YM Series Motors are designed for applications where precision and security is needed to move loads with low speed, these are ideal to rise illumination bars, bandshells and heavy weight elements.
- In standard configurations, the equipment is manufactured with capabilities of 100kN, 200kN and 400kN and a average speed of 0.2 m/s, which makes them the most versatile spectrum motors of its kind in the industry, other capabilities and speeds are available if requested.
- Optionally, they can be equipped with Slack Rope Detector, wether on the motor or remotely on the most convenient position, position encoders - absolute or incremental, according to requirements and double security brake integrated, also a Load Cell Constant Monitoring can be included, which allows the reporting of the load applied to the drum, even with the motor stoped.
- YM model are "Zero Fleet", allowing its instalation in any operation angle.



- Compact Fly Bar Hoist for horizontal or vertical installation
- Very low maintenance
- Highest level of safety and functionality
- 4 limit switches included
- Constant fleet angle
- Low noise level
- 1 to 5 lines available
- Highest safety factor 1- 8
- Several control options available, from simple touch button to complex advanced control system

• *System Model Construction*

FAMILY	SPEED mm/s F/V	Weight Kg	Falls	Control Kind AV, PBM, PB	EXAMPLE
YM	100F	200	4	PB	YM-100F/200/C4/PB

STAGE SETS

STANDARD MODEL CHART

MODEL EXAMPLE (NUMBER OF LINES AND TRAVEL MAY VARY)	MAX SPEED	GROSS LIFT CAPACITY *1,2	FLY TRAVEL DISTANCE *3	NUMBER OF LINES *4
YM -200F/100/C6 -20/TS	0.2 m/s	100 kg.	20 / 25 m	1 to 10
YM - 200F/200/C6 -20/TS	0.2 m/s	200 kg.	20 / 25 m	1 to 10
YM -100F/400/C6 -20/TS	0.1 m/s	400 kg.	20 / 25 m	1 to 10

*1 Gross lift capacity is Lifting capacity at the drum

*2 Live load capacity of line set is gross capacity minus batten and cable weight.

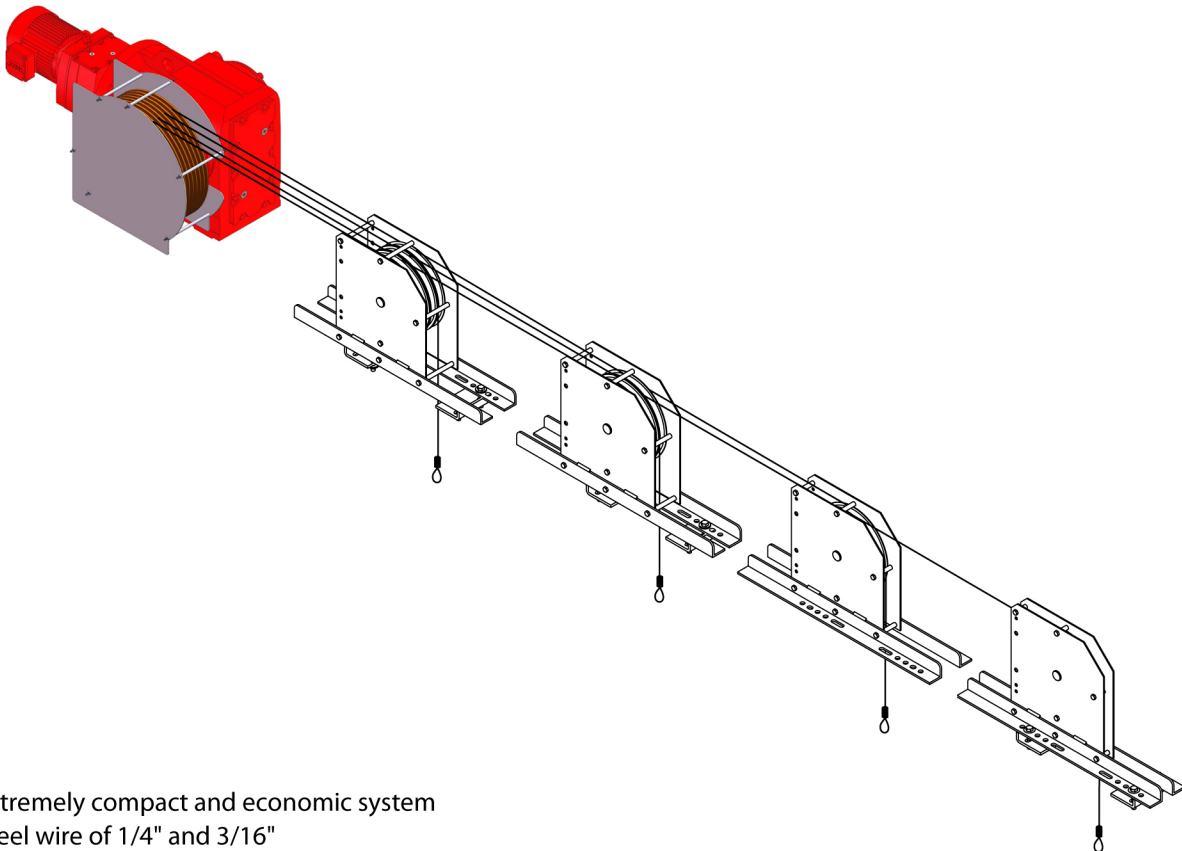
*3 Additional travel distance is available upon request.

*4 Additional lift lines are available upon request

ON ALL MODELS

Diameter rope (7x19 galvanized)	3/16, 1/4 depending on models
Speed range	>1:1000
Max acceleration / deceleration [m/s ²]	1,5
Installation position	Vertical / horizontal
Control options	AV, PBMTS, PBM, PB

Operation Example



- Extremely compact and economic system
- Steel wire of 1/4" and 3/16"

STAGE SETS

Tel: 52 (55) 3600 2000

Fax: 52 (55) 5000 9410

USA Phone: (956) 725 6772

Fax: (956) 725 2517

www.stage-sets.com